

Supporting your family



”

“We want to hear your and your family's wishes and thoughts. We strive to find ways that can help you. We look for important people who can support your family towards a better situation.”



We discuss together your child's and your family's situation, relationships, as well as other resources, strengths, and development needs.





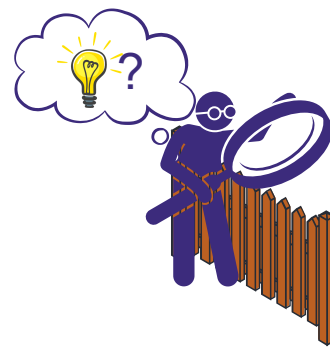
Sometimes things are so tangled that it is good to consider them together



What should we focus on first?



It is important to listen to and understand all family members



Together we find the hidden challenges



Professionals combine their expertise to find the best forms of support with you



The burden decreases when done together

More information

Your service is based on a research-based systemic operating model. In it, the lives of children and families are seen as a broad whole, where all parts affect each other. You are supported by the expertise of several different professionals