



We always discuss **without preconceived notions**

I am heard in decisions concerning my own life

Our situation was so tangled at first that **fortunately we accepted help**

We find solutions **together with an open mind**

We discuss together your child's and your family's situation, relationships, and other resources, strengths, and needs for change



Supporting your family



”

“We want to hear your and your family's wishes and thoughts. We strive to find ways that can help you, and we look for important people who can support your family towards a better situation.”



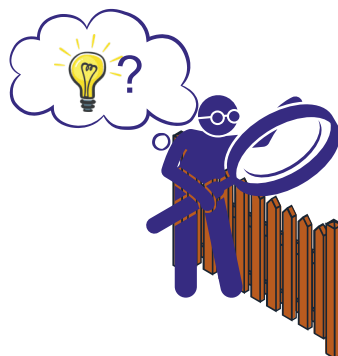
Sometimes things are so tangled that it is good to consider them together



What should we focus on first?



It is important to listen to and understand all family members



Together we find the hidden challenges



Professionals combine their expertise to find the best forms of support with you



The burden decreases when done together

Additional information

Your service is based on a research-based systemic operating model. In this model, the lives of children and families are viewed as a broad whole in which all parts influence one another. You have the support and professional expertise of many different specialists.